



Terminus 100 Underground Parking Atlanta, Georgia, United States

The developer wanted to maximize the footprint by pouring the walls right against the earth – leaving no room for exterior applied waterproofing. Kryton’s KIM admixture was the perfect choice because the waterproofing is added right to the concrete mix.

A total of 1097 cubic metres (1,200 cubic yards) of KIM-treated concrete was used to waterproof the below-grade shoring walls. In addition, the Krystol waterstop system was also used to treat the construction joints.



Al Mashfa Private Hospital Underground Parking Jeddah, Saudi Arabia

Kryton’s KIM admixture was used to waterproof the base slab and perimeter walls and the Krystol waterstop system was used for all the cold joints in the slabs and walls. The Krystol waterproofing system saved the team thousands of dollars and shaved 48 days off their construction schedule.

“The implementation of all typical waterproofing methods would have been near impossible for our project. Particularly given the challenges we incurred during excavation: the 12-metre (39.4 feet) cutoff wall and extreme head pressure. We required an advanced waterproofing system that could withstand all of these obstacles especially during the casting of the matt slab.”

Mr. A. Hamis Elmas, Project Manager & Architectural Consultant, Al Mashfa Group



KK Times Square Underground Parking Kota Kinabalu, Malaysia

For KK Times Square the developers used Kryton’s Krystol Internal Membrane admixture, surface applied Krystol T1/T2, Krystol Waterstop joint system and Krystol crack repair system. The Krystol line of products met the developer’s requirements for:

- affordability and ease of application
- a system that would be long lasting, minimizing future repair costs and inconveniences
- a waterproofing system that could withstand significant hydrostatic pressure and protect against the corrosion of steel reinforcements



Kryton International Inc.

Technical Headquarters, Canada
1645 East Kent Avenue
Vancouver BC
Canada V5P 2S8
Tel: 1-604-324-8280
Fax: 1-604-324-8899
Toll Free: 1-800-267-8280
Email: info@kryton.com
Web: www.kryton.com

Worldwide Distribution, Barbados
Phone: 1-246-437-3202
Fax: 1-246-429-5143
E-mail: distribution@kryton.com



www.kryton.com

CONSTRUCTION AND REPAIR OF CONCRETE PARKING STRUCTURES

Using Krystol® Technology



*At the Lab. In the Field.
By Your Side.*

Krystol provides a durable, leak-free solution that will last for the life of your parking structure.



“Krystol makes membranes unnecessary”

Build the Waterproofing right into the Concrete

Proper waterproofing is essential for parking garages. If not properly waterproofed water and waterborne contaminants can cause corrosion of reinforcing steel. This can significantly compromise the structural capacity of your structure.

Kryton's Krystol Concrete Waterproofing System transforms concrete into a powerful water resistant barrier. Adding Krystol to your concrete creates concrete that has reduced cracking, self-sealing and water-resistant abilities that provide a powerful defense against water damage and corrosion of reinforcing steel.

Unlike external membranes, which rely on a thin film to shield concrete from moisture, Krystol actually transforms the entire concrete mass into a water-proof barrier, protecting your concrete for the life of your structure.

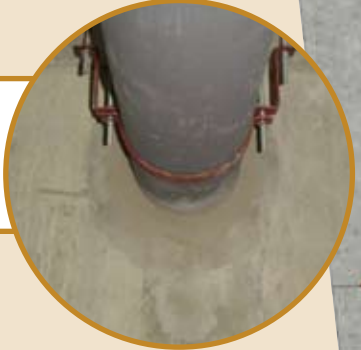
Repair and Extend the Life of Leaking Structures

Use the Krystol® family of products to maximize the service life of your parking structure. If underground parking structures are not properly waterproofed, ground water will penetrate the concrete allowing water and waterborne contaminants to enter the structure, leading to leaking and premature deterioration of structural components. Kryton's Krystol line of products can repair water damaged concrete from the inside and stop leaks permanently.

Kryton products are accredited by:



1 Create a watertight structure by using KIM in precast, cast-in-place or shotcrete walls and slabs. KIM builds the waterproofing right in to the concrete, eliminating the need for unreliable membranes.



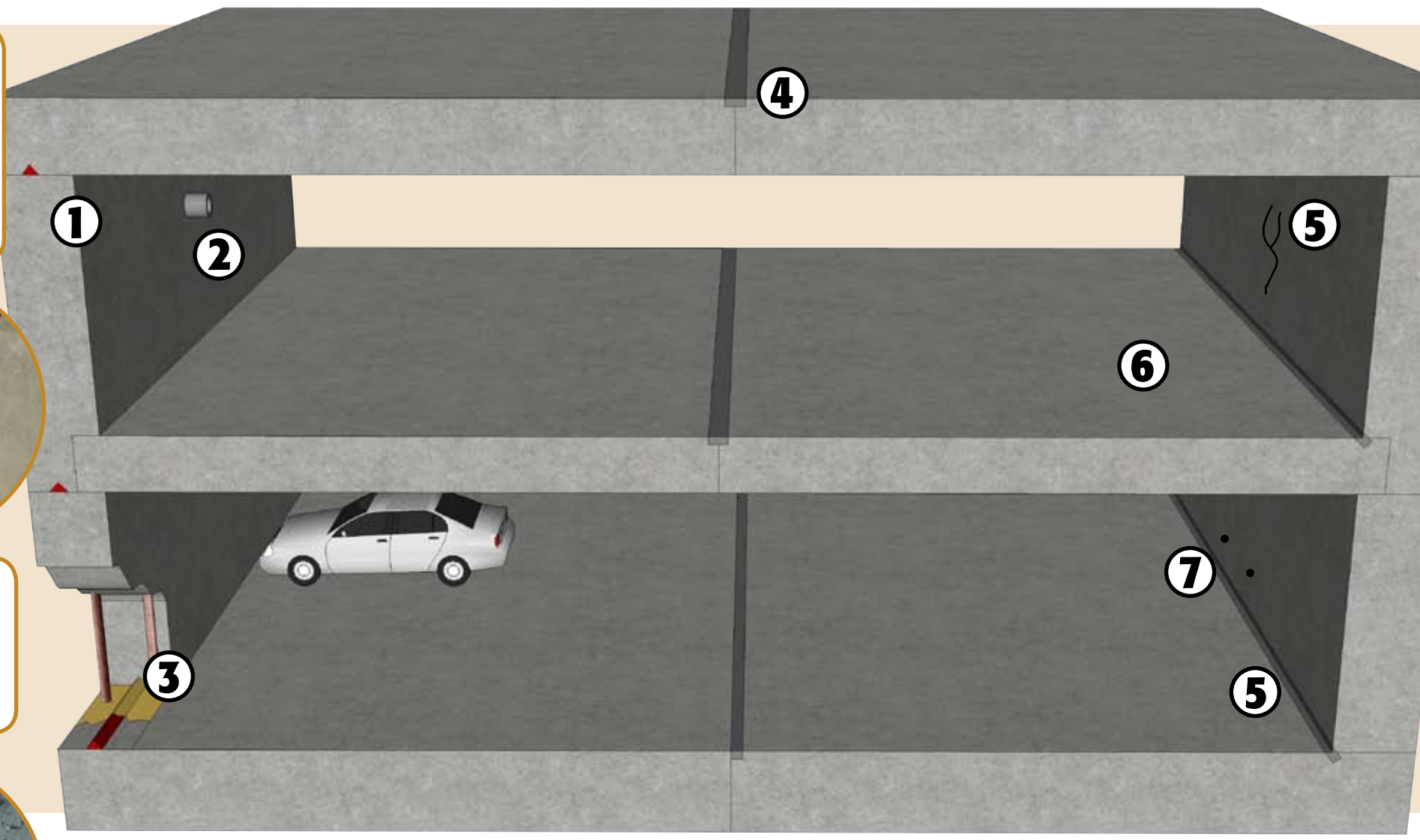
2 Waterproof pipe penetrations and tie-holes with Krystol Waterstop Grout.



3 Create two levels of construction joint protection with both a physical and crystalline chemical barrier by using the Krystol waterstop system.



4 Construct a water resistant seal at suspended slab control joints.



5 Waterproof leaking cracks and joints using the Krystol Crack Repair System.



6 Waterproof where existing membranes have failed or where there was no initial waterproofing with Krystol T1/T2; a cementitious slurry system that becomes an integral part of the concrete to prevent water ingress.



7 Repair leaking pipe penetrations and tie holes with Krystol T1 and Krystol Bari-Cote.

Krystol increases the lifespan of concrete structures by making concrete more durable. Krystol self-seals leaks and protects rebar from corrosion. Because Krystol is incorporated right into the concrete there is more efficient use of resources. Krystol replaces petroleum based membranes. Krystol treated concrete is easily recycled.

“ We have found the system to be highly effective in stopping the water leaks that occurred in the parking garage concrete walls. Since the Krystol repair system can be implemented from the interior side of the wall, excavation from the exterior side of the wall was avoided providing a substantial cost reduction. ”

Luther Sligh, LEDCOR CONSTRUCTION INC.